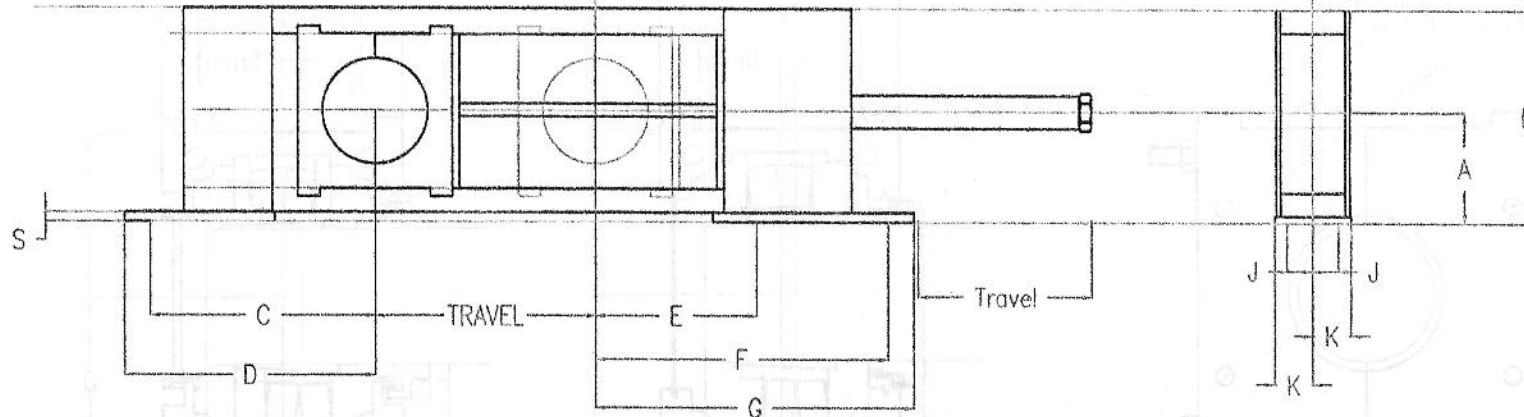
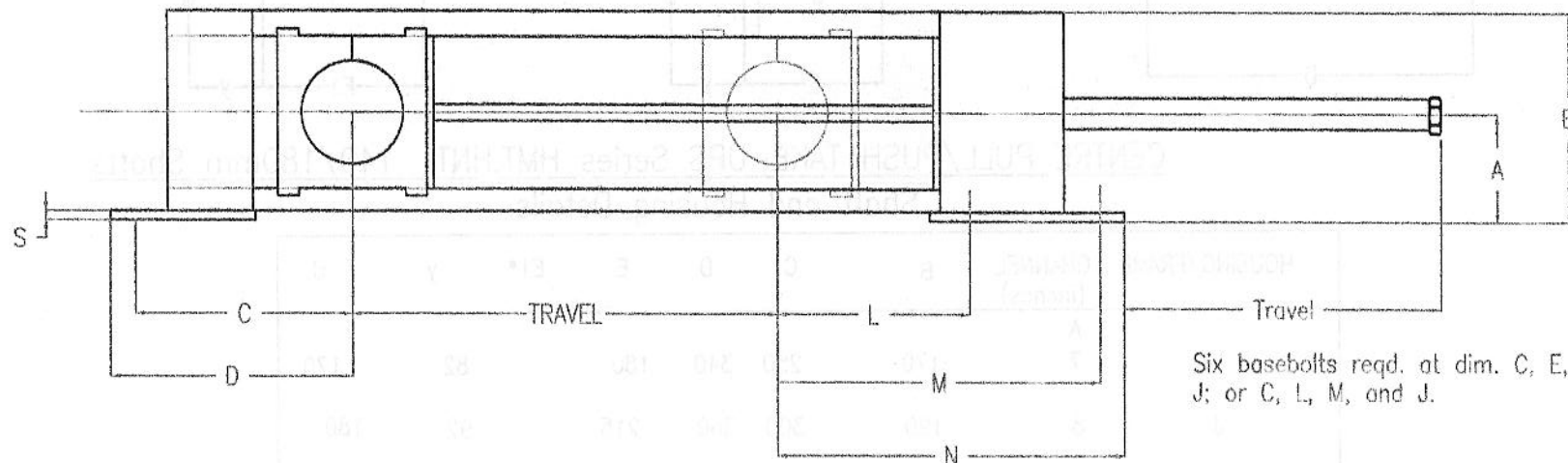


Centre Pull / Push – Hydraulic Series

Travel to & including 600mm



Travel over 600mm



Six basebolts reqd. at dim. C, E, F, and J; or C, L, M, and J.

FRAME AND MOUNTING DETAILS

HOUSING/FRAME	A	B	C	D	E	F	G	J	K	L	M	N	S	BOLT SIZE (in)
Hb	245	435	450	500	400	645	695	55	105	510	755	805	19	7/8
J	275	520	560	630	450	770	840	65	125	560	880	950	19	1
K	310	580	610	680	440	800	870	70	150	550	910	980	25	1

CENTRE PULL/PUSH TAKE-UPS
 Shaft Sizes from 140 to 380mm
 Type HMT are PULL, while Type HNT are PUSH

1:520

5-03 FRAME, Series HMT, HNT

H243
R5

**PT Manufacturing
& Imports Inc.**
 info@pt-manufacturing.com

Centre Pull / Push – Hydraulic Series

CENTRE PULL & HYDRAULIC TAKE-UPS 100/150mm Shafts FRAME DIMENSIONS

Shaft	HMT,HNT HHT,HJT,HKT,HLT	Hsg.	A	B	C	D	*	*	*	**	**	**	J	K	S	Base Bolts (inches)	Maximum Hydraulic Cylinder.
315/16" 100mm	522.315 522.100	E "	175 "	365 "	310 "	350 "	335 "	500 "	540 "	435 "	600 "	640 "	70 "	100 "	13 "	3/4" "	4 1/2" "
47/16 115mm	526.407 526.115	F "	200 "	435 "	390 "	435 "	390 "	590 "	635 "	490 "	660 "	705 "	70 "	100 "	13 "	3/4" "	4 1/2" "
415/16 125mm	528.415 528.125	G "	215 "	470 "	390 "	445 "	390 "	620 "	675 "	490 "	720 "	775 "	70 "	105 "	16 "	3/4" "	4 1/2" "
57/16 140mm	532.507 532.140	Ha "	245 "	540 "	450 "	500 "	400 "	645 "	695 "	500 "	745 "	795 "	70 "	105 "	19 "	7/8" "	5" "
515/16 150mm	3134.515 3134.150	Ha "	245 "	540 "	450 "	500 "	400 "	645 "	695 "	500 "	745 "	795 "	70 "	105 "	19 "	7/8" "	5" "

* for take-ups up to and including 600mm travel.

** for take-ups over 600 mm travel.

1:520	Catalogue Page 11
5/06	Dimensions, Page 10
H290 R9	PT Manufacturing & Imports Inc. info@pt-manufacturing.com